



Shared Ownership AT ABBEY BARN PARK

DEPOSITS FROM £3,375*

THIRD PHASE OF ESTABLISHED AND SOUGHT AFTER ABBNEY BARN PARK BY BERKELEY HOMES

First Shared Ownership release by Thrive Homes: 24 high quality one and two bedroom apartments with parking, private outside space and 34 acres of parkland on your doorstep.

Launch date: August 2025
Ready to move in: Autumn 2025
Lease length: 990 years
NHBC Guarantee

LUCY | 1 APRIL 2025 HAPPY SHARED OWNER

"Am so happy with my new home at the Parkside development in Watford. From viewing to getting the keys took around 10 weeks. Everyone at Thrive were very helpful and personable. The property itself is gorgeous and I feel incredibly lucky."

Thrive
Homes

thrivehomes.org.uk
abbeybarn@thrivehomes.org.uk



*based on buying a 25% share of a 1 bedroom apartment for £67,500, full market value £270,000 with a 5% deposit.

TYPE 1

ONE BEDROOM APARTMENT

TOTAL INTERNAL AREA - 52.5M²- 565.2FT²
BLOCK 138 | PLOT 335

Kitchen/Dining/Living	8.03m x 3.95m	26' 3" x 13'
Bedroom	4.03m x 3.25m	13' 2" x 10' 8"

C - Cupboard | DW - Dish Washer | F/F - Fridge Freezer |
W/M - Washing Machine | W/D - Washer Dryer

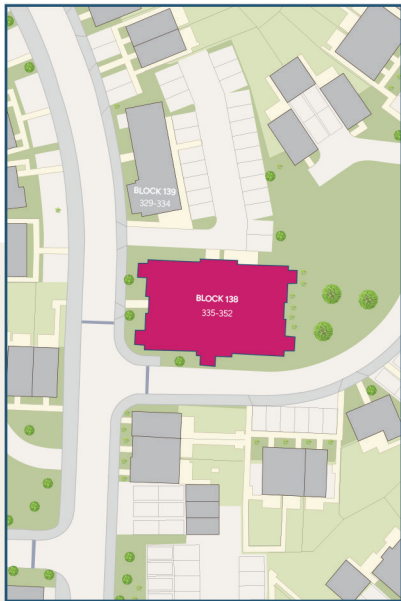


NEXT STEPS

We are selling homes at Abbey Barn Park of plan with homes ready for occupation from Autumn 2025.

To reserve your home you will need to meet with one of our panel mortgage advisors who will confirm the home is affordable and at what share. When we have confirmation of affordability, you will pay a £500 reservation fee and will need to instruct a solicitor and finalise your mortgage application. From this point to exchange of contracts we work to 45 days.

SITE PLAN



Plot Number	335
FMV	£270,000
Share %	25%
Share Price	£67,500
Guidance Min. Deposit	£3,375
Monthly Rent	£464.06
Monthly Service Charges	£150.00



thrivehomes.org.uk
abbeybarn@thrivehomes.org.uk

Note: - these dimensions are accurate to within +/- 50mm. They are not intended to be used for carpet sizes, appliance spaces or items of furniture. All dimensions taken to the widest point. Kitchen layouts are indicative. Pricing given valid as of 07/07/25 and may be subject to change and review every 3 months. Speak to your Sales Advisor for more information. Plots available subject to Thrive Homes' allocation and first come first serve policy. See website for details.

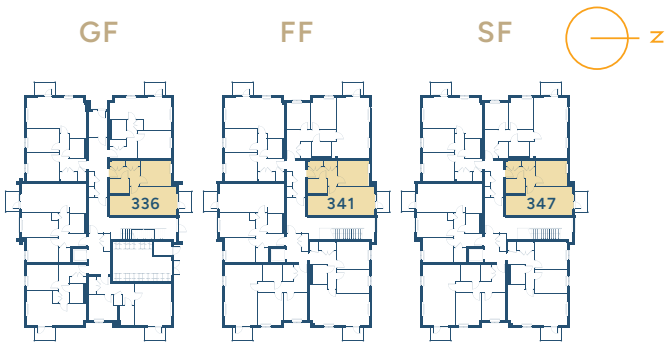
TYPE 2

ONE BEDROOM APARTMENT

TOTAL INTERNAL AREA - 49.9M²- 537.0FT²
PLOTS 336, 341 & 347

Kitchen/Dining/Living	8.05m x 3.44m	26' 4" x 11' 3"
Bedroom	3.70m x 3.05m	12' 1" x 10'

C - Cupboard | DW - Dish Washer | F/F - Fridge Freezer |
W/M - Washing Machine | W/D - Washer Dryer

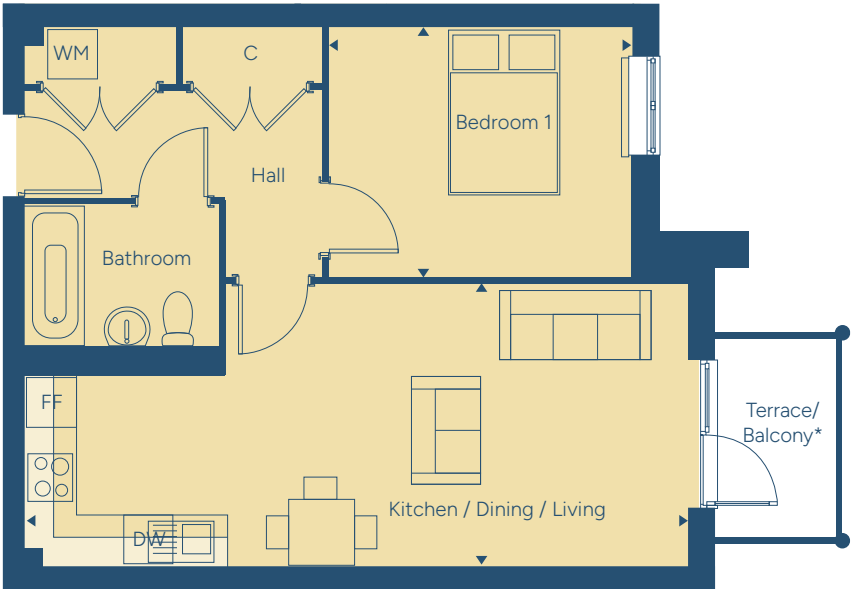
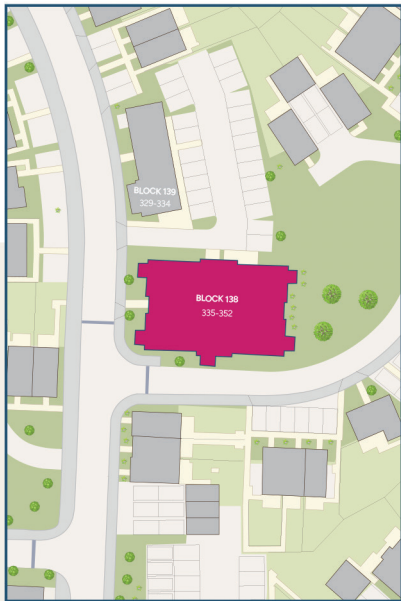


NEXT STEPS

We are selling homes at Abbey Barn Park of plan with homes ready for occupation from Autumn 2025.

To reserve your home you will need to meet with one of our panel mortgage advisors who will confirm the home is affordable and at what share. When we have confirmation of affordability, you will pay a £500 reservation fee and will need to instruct a solicitor and finalise your mortgage application. From this point to exchange of contracts we work to 45 days.

SITE PLAN



Plot Number	336	341	347
FMV	£270,000	£270,000	£272,500
Share %	25%	25%	25%
Share Price	£67,500	£67,500	£68,125
Guidance Min. Deposit	£3,375	£3,375	£3,406
Monthly Rent	£464.06	£464.06	£468.36
Monthly Service Charges	£150.00	£150.00	£150.00



thrivehomes.org.uk
abbeybarn@thrivehomes.org.uk

*To first and second floor apartments only. Note: - these dimensions are accurate to within +/- 50mm. They are not intended to be used for carpet sizes, appliance spaces or items of furniture. All dimensions taken to the widest point. Kitchen layouts are indicative. Pricing given valid as of 07/07/25 and may be subject to change and review every 3 months. Speak to your Sales Advisor for more information. Plots available subject to Thrive Homes' allocation and first come first serve policy. See website for details.

TYPE 3

ONE BEDROOM APARTMENT

TOTAL INTERNAL AREA - 49.2M²- 529.3FT²
PLOT 337

Kitchen/Dining/Living	5.00m x 4.32m	16' 4" x 14' 2"
Bedroom	3.50m x 3.04m	11' 5" x 10'



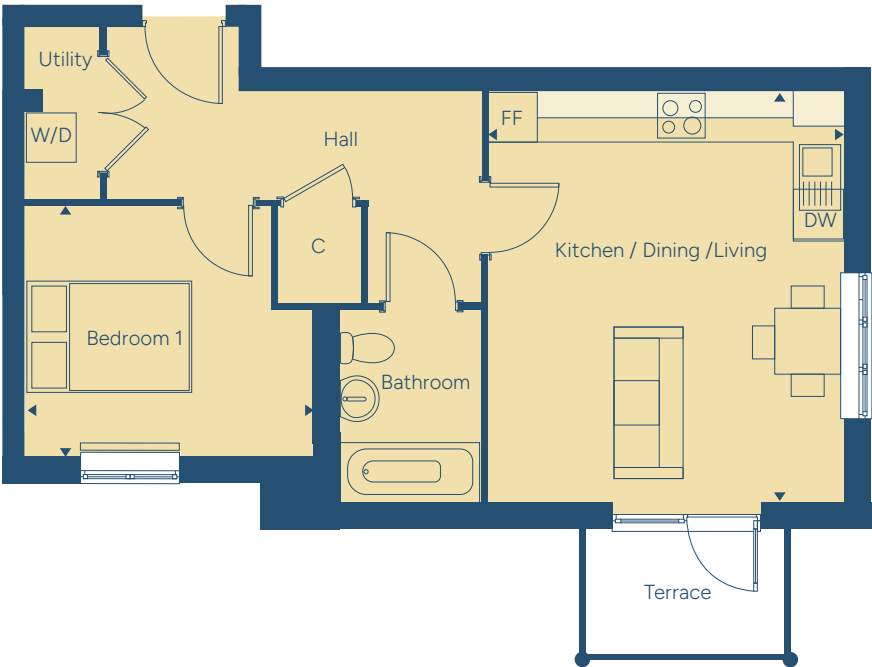
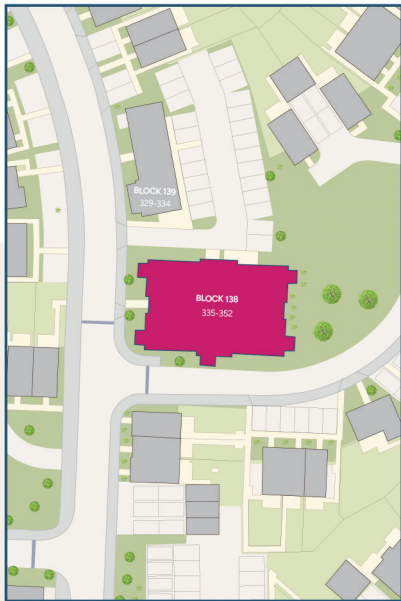
C - Cupboard | DW - Dish Washer | F/F - Fridge Freezer |
W/M - Washing Machine | W/D - Washer Dryer

NEXT STEPS

We are selling homes at Abbey Barn Park of plan with homes ready for occupation from Autumn 2025.

To reserve your home you will need to meet with one of our panel mortgage advisors who will confirm the home is affordable and at what share. When we have confirmation of affordability, you will pay a £500 reservation fee and will need to instruct a solicitor and finalise your mortgage application. From this point to exchange of contracts we work to 45 days.

SITE PLAN



Plot Number	337
FMV	£270,000
Share %	25%
Share Price	£67,500
Guidance Min. Deposit	£3,375
Monthly Rent	£464.06
Monthly Service Charges	£150.00



thrivehomes.org.uk
abbeybarn@thrivehomes.org.uk

Note: - these dimensions are accurate to within +/- 50mm. They are not intended to be used for carpet sizes, appliance spaces or items of furniture. All dimensions taken to the widest point. Kitchen layouts are indicative. Pricing given valid as of 07/07/25 and may be subject to change and review every 3 months. Speak to your Sales Advisor for more information. Plots available subject to Thrive Homes' allocation and first come first serve policy. See website for details.

TYPE 4

ONE BEDROOM APARTMENT

TOTAL INTERNAL AREA - 50.5M²- 544.0FT²
PLOT 338

Kitchen/Dining/Living	7.11m	x 4.12m	23' 3" x 13' 5"
Bedroom	3.73m	x 3.05m	12' 2" x 10'



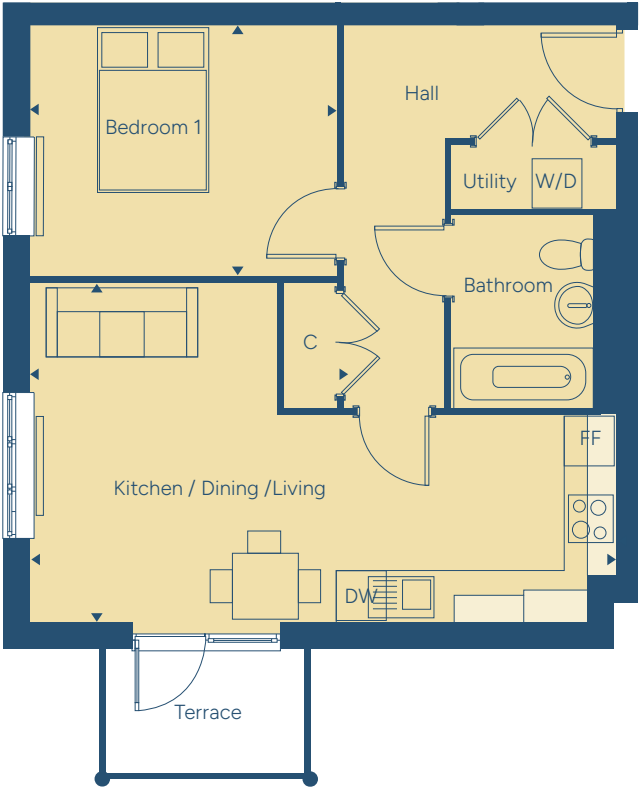
C - Cupboard | DW - Dish Washer | F/F - Fridge Freezer |
W/M - Washing Machine | W/D - Washer Dryer

NEXT STEPS

We are selling homes at Abbey Barn Park of plan with homes ready for occupation from Autumn 2025.

To reserve your home you will need to meet with one of our panel mortgage advisors who will confirm the home is affordable and at what share. When we have confirmation of affordability, you will pay a £500 reservation fee and will need to instruct a solicitor and finalise your mortgage application. From this point to exchange of contracts we work to 45 days.

SITE PLAN



Plot Number	338
FMV	£270,000
Share %	25%
Share Price	£67,500
Guidance Min. Deposit	£3,375
Monthly Rent	£464.06
Monthly Service Charges	£150.00



thrivehomes.org.uk
abbeybarn@thrivehomes.org.uk

Note: - these dimensions are accurate to within +/- 50mm. They are not intended to be used for carpet sizes, appliance spaces or items of furniture. All dimensions taken to the widest point. Kitchen layouts are indicative. Pricing given valid as of 07/07/25 and may be subject to change and review every 3 months. Speak to your Sales Advisor for more information. Plots available subject to Thrive Homes' allocation and first come first serve policy. See website for details.

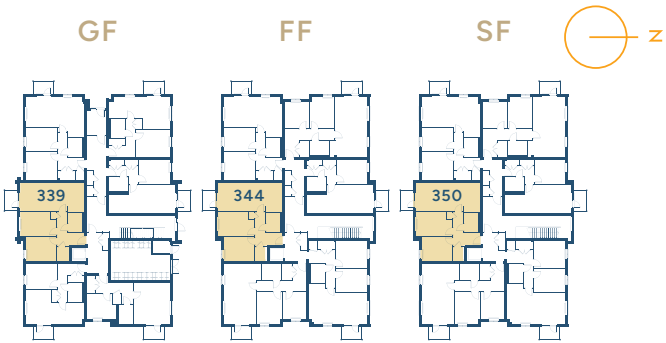
TYPE 5

TWO BEDROOM APARTMENT

TOTAL INTERNAL AREA - 67.1M²- 722.0FT²
PLOTS 339, 344 & 350

Kitchen/Dining/Living	7.79m x 3.50m	25' 6" x 11' 5"
Bedroom 1	4.37m x 2.88m	14' 3" x 9' 4"
Bedroom 2	3.69m x 3.01m	12' 1" x 9' 9"

C - Cupboard | DW - Dish Washer | F/F - Fridge Freezer |
W/M - Washing Machine | W/D - Washer Dryer

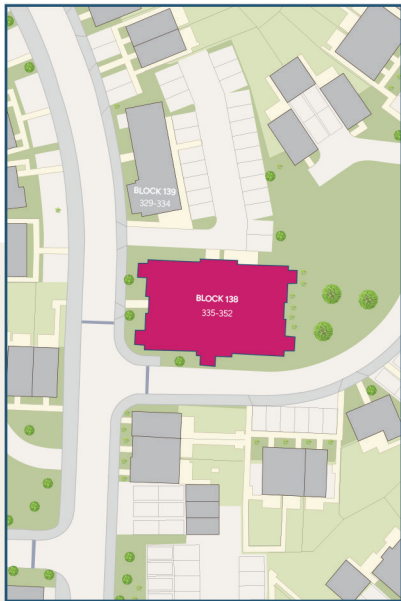


NEXT STEPS

We are selling homes at Abbey Barn Park of plan with homes ready for occupation from Autumn 2025.

To reserve your home you will need to meet with one of our panel mortgage advisors who will confirm the home is affordable and at what share. When we have confirmation of affordability, you will pay a £500 reservation fee and will need to instruct a solicitor and finalise your mortgage application. From this point to exchange of contracts we work to 45 days.

SITE PLAN



Plot Number	339	344	350
FMV	£355,000	£355,000	£357,500
Share %	25%	25%	25%
Share Price	£88,750	£88,750	£89,375
Guidance Min. Deposit	£4,438	£4,438	£4,469
Monthly Rent	£610.16	£610.16	£614.45
Monthly Service Charges	£150.00	£150.00	£150.00

Thrive
Homes

thrivehomes.org.uk
abbeybarn@thrivehomes.org.uk

*To first and second floor apartments only. Note: - these dimensions are accurate to within +/- 50mm. They are not intended to be used for carpet sizes, appliance spaces or items of furniture. All dimensions taken to the widest point. Kitchen layouts are indicative. Pricing given valid as of 07/07/25 and may be subject to change and review every 3 months. Speak to your Sales Advisor for more information. Plots available subject to Thrive Homes' allocation and first come first serve policy. See website for details.

TYPE 6

TWO BEDROOM APARTMENT

TOTAL INTERNAL AREA - 49.9M²- 537.0FT²
PLOTS 340, 343, 346, 349 & 352

Kitchen/Dining/Living	7.11m	x 4.26m	23' 3" x 14'
Bedroom 1	3.83m	x 2.80m	12' 6" x 9' 2"
Bedroom 2	3.83m	x 3.43m	12' 6" x 11' 3"

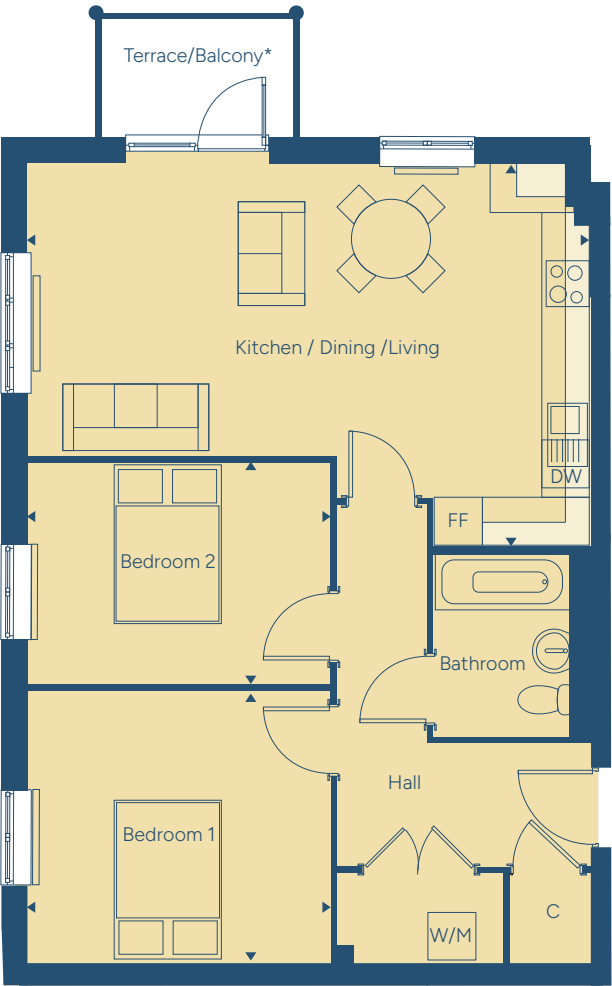
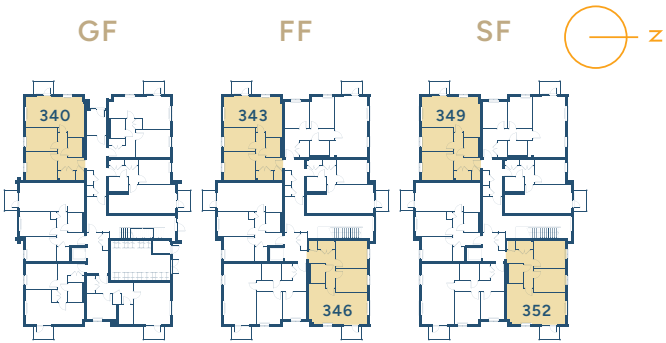
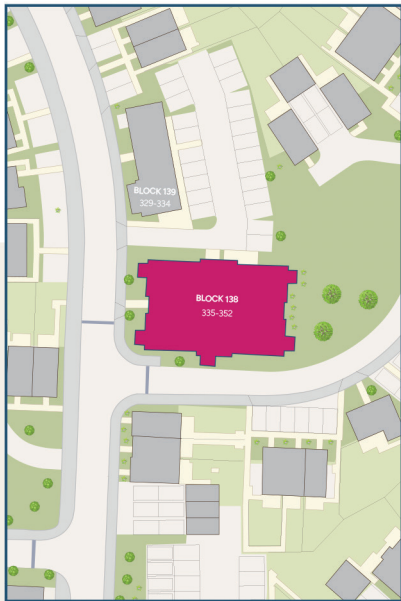
C - Cupboard | DW - Dish Washer | F/F - Fridge Freezer |
W/M - Washing Machine | W/D - Washer Dryer

NEXT STEPS

We are selling homes at Abbey Barn Park of plan with homes ready for occupation from Autumn 2025.

To reserve your home you will need to meet with one of our panel mortgage advisors who will confirm the home is affordable and at what share. When we have confirmation of affordability, you will pay a £500 reservation fee and will need to instruct a solicitor and finalise your mortgage application. From this point to exchange of contracts we work to 45 days.

SITE PLAN



Plot Number	340	343	346	349	352
FMV	£370,000	£370,000	£370,000	£372,500	£372,500
Share %	25%	25%	25%	25%	25%
Share Price	£92,500	£92,500	£92,500	£93,125	£93,125
Guidance Min. Deposit	£4,625	£4,625	£4,625	£4,656	£4,656
Monthly Rent	£635.94	£635.94	£635.94	£640.23	£640.23
Monthly Service Charges	£150.00	£150.00	£150.00	£150.00	£150.00

Thrive
Homes

thrivehomes.org.uk
abbeybarn@thrivehomes.org.uk

*To first and second floor apartments only. Note: - these dimensions are accurate to within +/- 50mm. They are not intended to be used for carpet sizes, appliance spaces or items of furniture. All dimensions taken to the widest point. Kitchen layouts are indicative. Pricing given valid as of 07/07/25 and may be subject to change and review every 3 months. Speak to your Sales Advisor for more information. Plots available subject to Thrive Homes' allocation and first come first serve policy. See website for details.

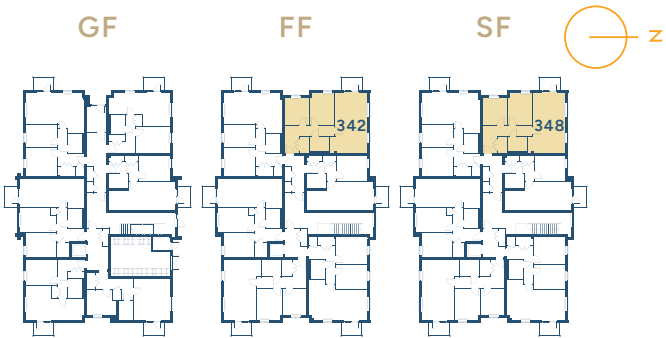
TYPE 7

TWO BEDROOM APARTMENT

TOTAL INTERNAL AREA - 70.0M²- 753.2FT²
PLOTS 342 & 348

Kitchen/Dining/Living	7.27m x 3.92m	19' 2" x 14' 8"
Bedroom 1	3.82m x 3.01m	13' 7" x 6' 2"
Bedroom 2	3.26m x 2.88m	13' 7" x 6' 2"

C - Cupboard | DW - Dish Washer | F/F - Fridge Freezer |
W/M - Washing Machine | W/D - Washer Dryer

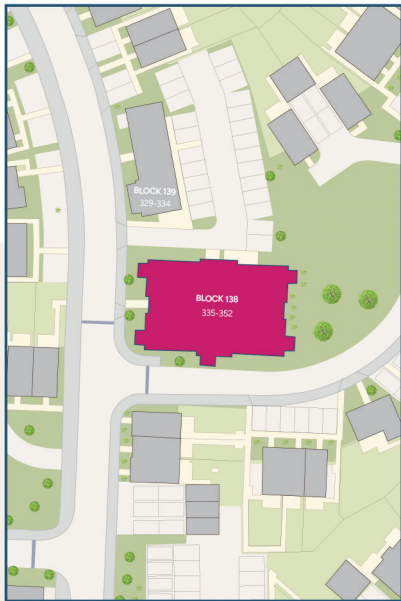


NEXT STEPS

We are selling homes at Abbey Barn Park of plan with homes ready for occupation from Autumn 2025.

To reserve your home you will need to meet with one of our panel mortgage advisors who will confirm the home is affordable and at what share. When we have confirmation of affordability, you will pay a £500 reservation fee and will need to instruct a solicitor and finalise your mortgage application. From this point to exchange of contracts we work to 45 days.

SITE PLAN



Plot Number	342	348
FMV	£370,000	£372,500
Share %	25%	25%
Share Price	£92,500	£93,125
Guidance Min. Deposit	£4,625	£4,656
Monthly Rent	£635.94	£640.23
Monthly Service Charges	£150.00	£150.00



thrivehomes.org.uk
abbeybarn@thrivehomes.org.uk

Note: - these dimensions are accurate to within +/- 50mm. They are not intended to be used for carpet sizes, appliance spaces or items of furniture. All dimensions taken to the widest point. Kitchen layouts are indicative.Pricing given valid as of 07/07/25 and may be subject to change and review every 3 months. Speak to your Sales Advisor for more information. Plots available subject to Thrive Homes' allocation and first come first serve policy. See wesite for details.

TYPE 8

TWO BEDROOM APARTMENT

TOTAL INTERNAL AREA - 49.9M²- 537.0FT²
PLOTS 345 & 351

Kitchen/Dining/Living	7.11m	x 4.26m	23' 3" x 14'
Bedroom 1	3.83m	x 2.80m	12' 6" x 9' 2"
Bedroom 2	3.83m	x 3.43m	12' 6" x 11' 3"

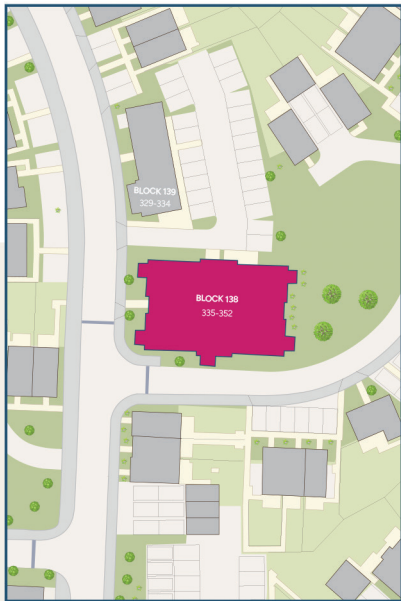
C - Cupboard | DW - Dish Washer | F/F - Fridge Freezer |
W/M - Washing Machine | W/D - Washer Dryer

NEXT STEPS

We are selling homes at Abbey Barn Park of plan with homes ready for occupation from Autumn 2025.

To reserve your home you will need to meet with one of our panel mortgage advisors who will confirm the home is affordable and at what share. When we have confirmation of affordability, you will pay a £500 reservation fee and will need to instruct a solicitor and finalise your mortgage application. From this point to exchange of contracts we work to 45 days.

SITE PLAN



Plot Number	345	351
FMV	£370,000	£372,500
Share %	25%	25%
Share Price	£92,500	£93,125
Guidance Min. Deposit	£4,625	£4,656
Monthly Rent	£635.94	£640.23
Monthly Service Charges	£150.00	£150.00

Thrive
Homes

thrivehomes.org.uk
abbeybarn@thrivehomes.org.uk

Note: - these dimensions are accurate to within +/- 50mm. They are not intended to be used for carpet sizes, appliance spaces or items of furniture. All dimensions taken to the widest point. Kitchen layouts are indicative. Pricing given valid as of 07/07/25 and may be subject to change and review every 3 months. Speak to your Sales Advisor for more information. Plots available subject to Thrive Homes' allocation and first come first serve policy. See website for details.

TYPE 9

ONE BEDROOM APARTMENT

TOTAL INTERNAL AREA - 50.7M²- 567.0FT²
PLOT 329

Kitchen/Dining/Living	7.66m x 3.40m	25' 1" x 11' 2"
Bedroom	3.80m x 3.77m	12' 5" x 12' 4"

C - Cupboard | DW - Dish Washer | F/F - Fridge Freezer |
W/M - Washing Machine | W/D - Washer Dryer

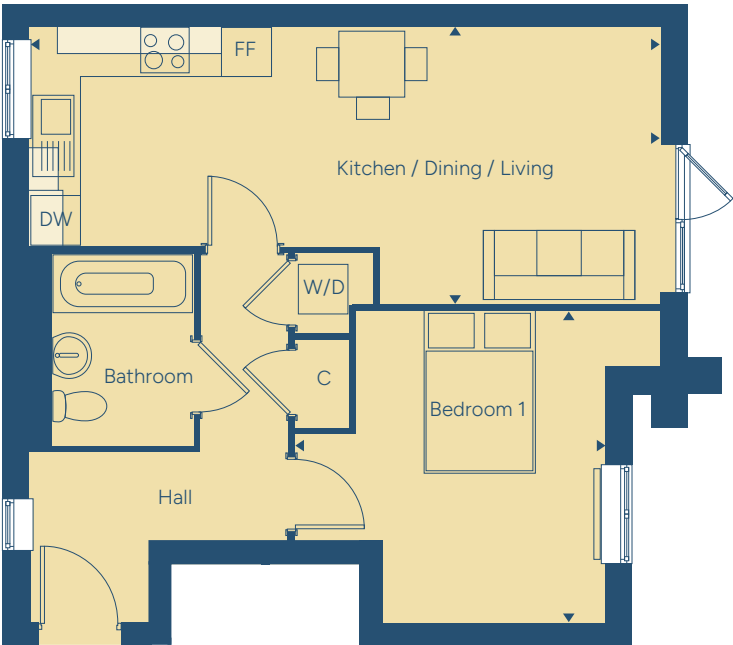
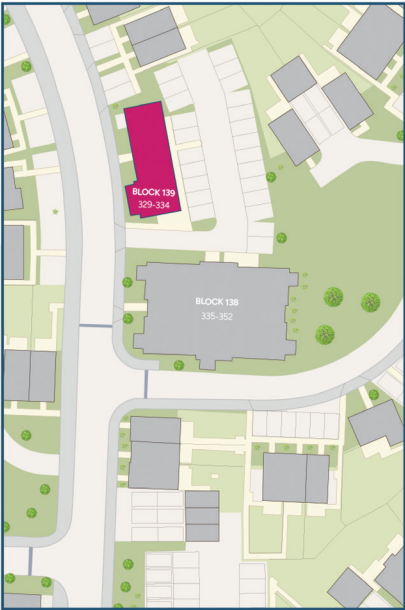


NEXT STEPS

We are selling homes at Abbey Barn Park of plan with homes ready for occupation from Autumn 2025.

To reserve your home you will need to meet with one of our panel mortgage advisors who will confirm the home is affordable and at what share. When we have confirmation of affordability, you will pay a £500 reservation fee and will need to instruct a solicitor and finalise your mortgage application. From this point to exchange of contracts we work to 45 days.

SITE PLAN



Plot Number	329
FMV	£270,000
Share %	25%
Share Price	£67,500
Guidance Min. Deposit	£3,375
Monthly Rent	£464.06
Monthly Service Charges	£150.00



thrivehomes.org.uk
abbeybarn@thrivehomes.org.uk

Note: - these dimensions are accurate to within +/- 50mm. They are not intended to be used for carpet sizes, appliance spaces or items of furniture. All dimensions taken to the widest point. Kitchen layouts are indicative. Pricing given valid as of 07/07/25 and may be subject to change and review every 3 months. Speak to your Sales Advisor for more information. Plots available subject to Thrive Homes' allocation and first come first serve policy. See website for details.

TYPE 10

ONE BEDROOM APARTMENT

TOTAL INTERNAL AREA - 52.7M²- 565.0FT²
PLOTS 332, 333 & 334

Kitchen/Dining/Living	6.99m x 3.37m	22' 9" x 11' 1"
Bedroom	4.10m x 3.73m	13' 5" x 12' 2"

C - Cupboard | DW - Dish Washer | F/F - Fridge Freezer |
W/M - Washing Machine | W/D - Washer Dryer

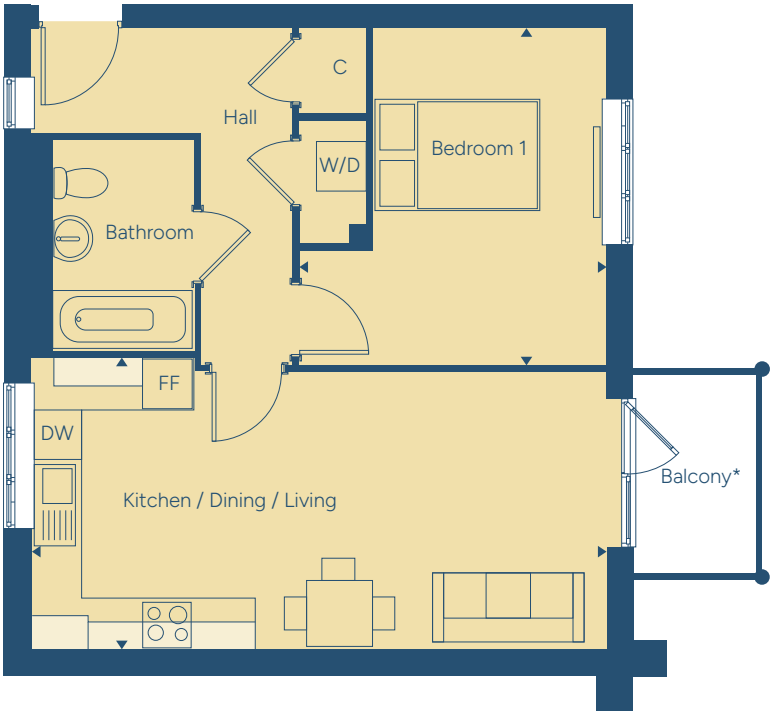


NEXT STEPS

We are selling homes at Abbey Barn Park of plan with homes ready for occupation from Autumn 2025.

To reserve your home you will need to meet with one of our panel mortgage advisors who will confirm the home is affordable and at what share. When we have confirmation of affordability, you will pay a £500 reservation fee and will need to instruct a solicitor and finalise your mortgage application. From this point to exchange of contracts we work to 45 days.

SITE PLAN



Plot Number	332	333	334
FMV	£270,000	£270,000	£272,500
Share %	25%	25%	25%
Share Price	£67,500	£67,500	£68,125
Guidance Min. Deposit	£3,375	£3,375	£3,406
Monthly Rent	£464.06	£464.06	£468.36
Monthly Service Charges	£150.00	£150.00	£150.00

Thrive
Homes

thrivehomes.org.uk
abbeybarn@thrivehomes.org.uk

*To first and second floor apartments only. Note: - these dimensions are accurate to within +/- 50mm. They are not intended to be used for carpet sizes, appliance spaces or items of furniture. All dimensions taken to the widest point. Kitchen layouts are indicative. Pricing given valid as of 07/07/25 and may be subject to change and review every 3 months. Speak to your Sales Advisor for more information. Plots available subject to Thrive Homes' allocation and first come first serve policy. See website for details.

TYPE II

TWO BEDROOM APARTMENT

TOTAL INTERNAL AREA - 70.7M²- 760.5FT²
PLOTS 330 & 331

Kitchen/Dining/Living	7.66m x 4.23m	25' 1" x 13' 9"
Bedroom 1	4.41m x 2.98m	14' 5" x 9' 8"
Bedroom 2	3.73m x 3.04m	12' 2" x 10'

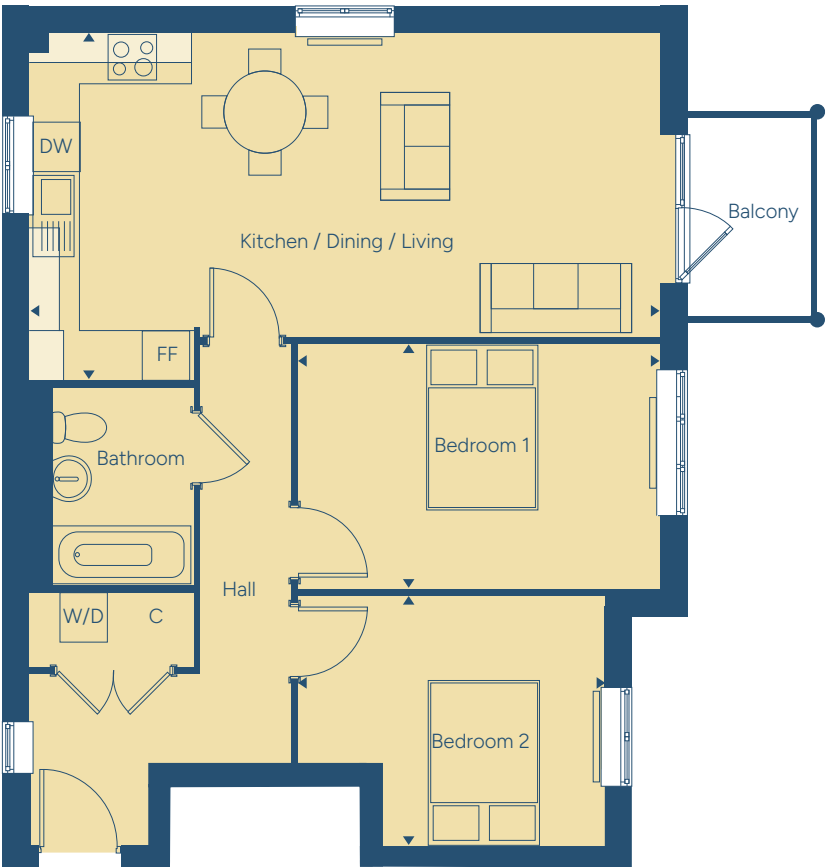
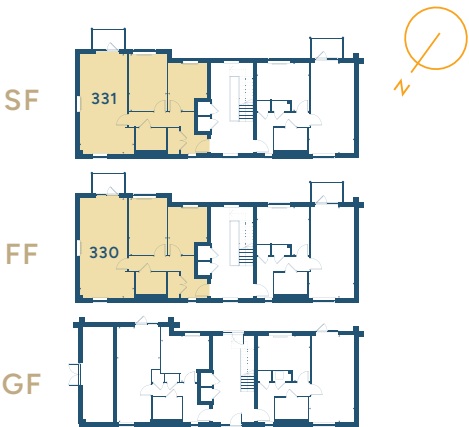
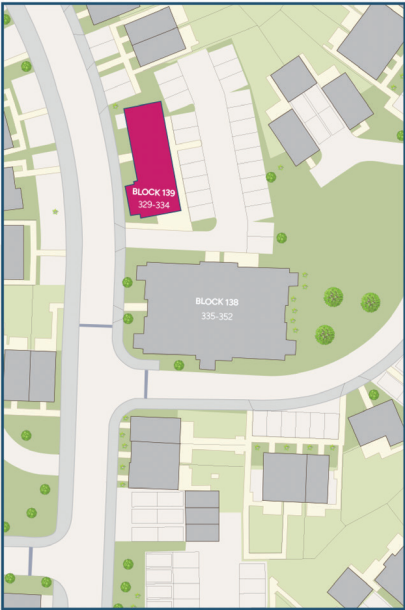
C - Cupboard | DW - Dish Washer | F/F - Fridge Freezer |
W/M - Washing Machine | W/D - Washer Dryer

NEXT STEPS

We are selling homes at Abbey Barn Park of plan with homes ready for occupation from Autumn 2025.

To reserve your home you will need to meet with one of our panel mortgage advisors who will confirm the home is affordable and at what share. When we have confirmation of affordability, you will pay a £500 reservation fee and will need to instruct a solicitor and finalise your mortgage application. From this point to exchange of contracts we work to 45 days.

SITE PLAN



Plot Number	330	331
FMV	£370,000	£372,500
Share %	25%	25%
Share Price	£92,500	£93,125
Guidance Min. Deposit	£4,625	£4,656
Monthly Rent	£635.94	£640.23
Monthly Service Charges	£150.00	£150.00

Thrive
Homes

thrivehomes.org.uk
abbeybarn@thrivehomes.org.uk

Note: - these dimensions are accurate to within +/- 50mm. They are not intended to be used for carpet sizes, appliance spaces or items of furniture. All dimensions taken to the widest point. Kitchen layouts are indicative. Pricing given valid as of 07/07/25 and may be subject to change and review every 3 months. Speak to your Sales Advisor for more information. Plots available subject to Thrive Homes' allocation and first come first serve policy. See website for details.